



In southern California, it seems, the majority of homeowners, landscapers and gardeners have some sort of slope to deal with. In most cases graded slopes are extremely difficult to plant, often with poor, compacted soil and steep grades. There are several variables to consider when choosing plant material for a slope: the location and microclimate involved (inland, coastal, high winds, extreme temperature...), the direction or exposure of the slope, erosion factors, soil type and the stability of the slope and soil conditions.

Suitable low water and low maintenance choices for a slope, to replace traditional generally sterile plantings of ivy and ice plant, include an assortment of regionally appropriate grasses, ground covers, shrubs and trees. These plants are naturally adapted to our environment and require fewer resources and less labor to care for them. By using a variety of plants on your slope, you can achieve a refreshing, diverse and visually stimulating slope landscape. Proper spacing and plant selection will cut down on pruning maintenance and competition for moisture. The diversity in the landscape will bring back the pollinators, butterflies, hummingbirds and songbirds. For more information on slope planting, watering and other slope questions please call us or stop in at our retail store, Casa la Paz.



Large and
Medium Shrubs

Sunny and Hot*

- Baccharis* species Coyote Bush
- Ceanothus* 'Concha' Wild Lilac
- Cercocarpus* species Mtn. Mahogany
- Heteromeles arbutifolia* Toyon
- Sambucus nigra* ssp. *caerulea* Elderberry
- Rhus ovata* Sugarbush

Sunny and Cooler

- Arctostaphylos* species and varieties
Manzanita
- Artemisia californica* Calif. Sagebrush
- Atriplex lentiformis* Coastal Quail Bush
- Rhus integrifolia* Lemonade Berry

Partial Shade

- Rhamnus* species Coffeeberry

Grasses

- Aristida purpurea* Purple Three-Awn
- Leymus* sp. Wildrye
- Muhlenbergia rigens* Deer Grass
- Stipa* species Needlegrass

Slope Staples

Small Shrubs and
Ground Covers

Sunny and Hot*

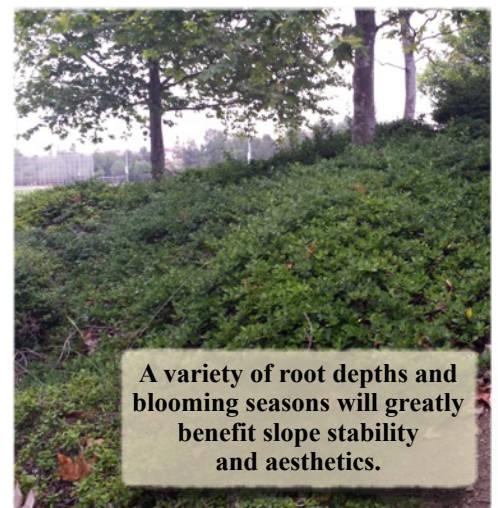
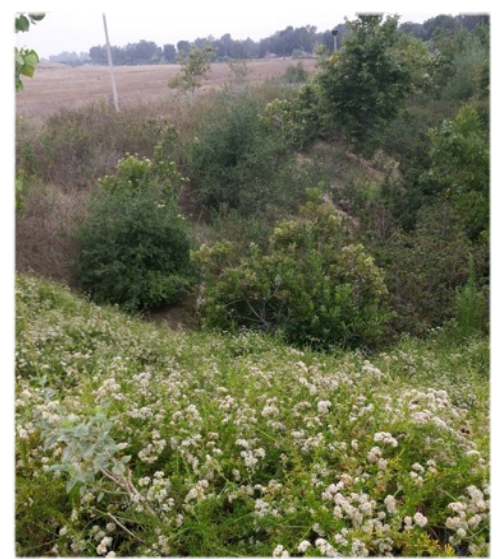
- Baccharis* 'Pigeon Point' Coyote Bush
- Ceanothus* sp. and varieties Wild Lilac
- Cleome isomeris* Bladderpod
- Encelia farinosa* Incienso
- Eriogonum* sp. Buckwheat
- Salvia* sp and varieties Sage
- Hesperoyucca whipplei*
Our Lord's Candle

Sunny and Cooler

- Arctostaphylos* sp. varieties Manzanita
- Encelia californica* Coast Sunflower
- Iva hayesiana* San Diego Marsh Elder
- Corethrogyne* 'Silver Carpet'
Silver Carpet Aster

Partial Shade

- Ribes viburnifolium* Catalina Perfume
- Salvia* 'Tera Seca' Tera Seca Sage
- Symphoricarpos mollis* Creeping Snowberry



A variety of root depths and blooming seasons will greatly benefit slope stability and aesthetics.

* In most situations Sunny and Hot would also work for a cooler location as well